



ROSEFIELD

Fall - Winter 2023

MONA LUXWARE

MONA LUXWARE
Uhren & Schmuckvertrieb

D-40593 Düsseldorf

Tel.: +49 211 46890089

Fax: +49 211 46890087

Web: www.MONA-LUXWARE.de

E-Mail: rosefield@mona-luxware.de

This is Rosefield



Rosefield reimagines watches & jewelry for relaxed elegance and easy living. We make fashion-forward styles that blend the classic with the modern. Where function meets form. At a price that works for today's cosmopolitan consumer.

Who is she? The Rosefield Woman is the epitome of city living with her finger on the pulse of what's next, what's new, what's now. She's the quintessential cool girl that isn't afraid to try new things. The Rosefield Woman sets trends — never follows them — and knows what she wants in life. This is at the core of our design philosophy.

Rosefield draws inspiration from Dutch minimalist design while taking cues from global contemporary fashion aesthetics. Our collections incorporate elements of vintage beauty from classic pieces mixed with the creativity of the future.

It's about being timeless, not trendy.

Novelties

Fall - Winter 2023



Studio Edition 04

AVAILABLE FROM SEPTEMBER

- Case dimensions: 19.5 × 24 mm
- Case thickness: 7 mm
- Dial type: White Sunray Etching (01)

- Black Sunray Etching (02) Grey Sunray (03)
- Strap size: 19 mm
- Strap material: Stainless steel

01.



SWGSG-076 € 159

White - Steel
- Gold

EAN: 8720791522278



02.



SBGSG-077 € 159

Black - Steel
- Silver

EAN: 8720791522285



03.



SGSSS-078 € 159

Gunmetal - Steel
- Silver

EAN: 8720791522292



New Additions - Emerald

AVAILABLE FROM SEPTEMBER

Octagon XS, Boxy XS, Small Edit & Pearl Edit



OEGSG-079 € 129

Emerald - Steel
- Gold

EAN: 8720791522308



BEGSG-Q050 € 119

Emerald - Steel
- Gold

EAN: 8720791522315



SEEGMG-SE72 € 99

Emerald - Mesh
- Gold

EAN: 8720791522742



PEGMG-R10 € 99

Emerald - Mesh
- Gold

EAN: 8720791522346



New Additions - Gunmetal

AVAILABLE FROM OCTOBER

Gemme, Boxy XS, Small Edit & Octagon



GGSSS-G05 € 139

Gunmetal - Steel
- Silver

EAN: 8720791522353



BGSSS-Q051 € 119

Gunmetal - Steel
- Silver

EAN: 8720791522360



SGSSS-SE03 € 119

Gunmetal - Steel
- Silver

EAN: 8720791522377



OGSSS-O80 € 129

Gunmetal - Steel
- Silver

EAN: 8720791522384



Gift Sets

AVAILABLE FROM OCTOBER



26WGSX-X278 € 129

Small Edit White Gold +
Hammered Chainlink Bracelet
Gold

EAN: 8720791522407



OWDSG-X279 € 149

Octagon XS Duotone
+ Multi Crystal Bracelet

EAN: 8720791522414





ROSEFIELD

AMS/NYC

Watches

The Gemme

- Case dimensions: 21.5 × 27.5 mm
- Case thickness: 7.0 mm
- Dial type: Matte
- Strap size: 12 mm
- Strap material: Stainless steel



GWGSG-G02 € 139

White - Steel
- Gold

EAN: 8720791521448



GWSSS-G04 € 139

White - Steel
- Silver

EAN: 8720791521462



GWSSS-G03 € 139

White - Steel
- Silver Gold Duo

EAN: 8720791521455



Studio Edition 01

- Case dimensions: 18.5 × 15 mm
- Case thickness: 7.5 mm
- Dial type: Sunray etching (01 - 03) Mother of Pearl (04)
- Adjustable size: 15.5 cm (min.) 18.7 cm (max.)
- Strap material: Stainless steel

01.



SWGSG-O52 € 159

White - Steel
- Gold

EAN: 8720246512212



02.



SWSSS-O53 € 159

White - Steel
- Silver

EAN: 8720246512229



03.



SBGSG-O66 € 159

Black - Steel
- Gold

EAN: 8720246519532



04.



SWGSG-OV13 € 159

White - Steel
- Gold

EAN: 8720246512236



Studio Edition 02

- Case dimensions: 19.5 × 24 mm
- Case thickness: 7.0 mm
- Dial type: Sunray etching
- Strap material: Stainless steel
- Strap size: 16 mm
- Adjustable wrist size: 13.8 cm (min.)
18.5 cm (max.)



SWGSG-O55 € 159

White - Steel
- Gold

EAN: 8720246516395



SBGSG-O57 € 159

Black - Steel
- Gold

EAN: 8720246516593



SWSSS-O56 € 159

White - Steel
- Silver

EAN: 8720246516401



Studio Edition 03

- Case dimensions: 18 × 18 mm
- Case thickness: 7.5 mm
- Dial type: Sunray etching
- Ring material: Stainless steel 316L
- Dial type: Sunray etching



SBGSG-O67 € 139

Watch Ring Black - Steel
- Gold

EAN: 8720246519556



The Octagon

- Case dimensions: 23 × 29 mm
- Case thickness: 7.5 mm
- Dial type: Sunray etching (01 - 06) Champagne (07)
- Strap size: 14 mm
- Strap material: Stainless steel (01 - 05, 07)
Genuine leather (06)



OCWSG-O40 € 129

White Sunray - Steel
- Gold

EAN: 8720039335813



OCWSS-O41 € 129

White Sunray - Steel
- Silver

EAN: 8720039335820



OCWSRG-O42 € 129

White Sunray - Steel
- Rose Gold

EAN: 8720039335837



OBSSG-O47 € 129

Black Sunray - Steel
- Gold

EAN: 8720039339194



OWSSSG-O48 € 129

White Sunray - Steel
- Silver Gold Duo

EAN: 8720039339200



OBSBG-O49 € 119

Black Sunray - Leather
- Gold

EAN: 8720039339217



OCGSG-O65 € 129

Champagne - Steel
- Gold

EAN: 8720246519518



The Octagon XS

- Case dimensions: 19.5 × 24 mm
- Case thickness: 7.0 mm
- Dial type: Sunray etching (01 - 08) Mother of Pearl (09 - 10)
- Strap size: 12 mm
- Strap material: Stainless steel

01.



OWGSG-O60 € 129

White Sunray - Steel
- Gold

EAN: 8720246519341



02.



OBGSG-O61 € 129

Black Sunray - Steel
- Gold

EAN: 8720246519358



03.



OWDSG-O62 € 129

White Sunray - Steel
- Silver Gold Duo

EAN: 8720246519365



04.



OWGSS-O63 € 129

White Sunray - Steel
- Silver

EAN: 8720246519372



05.



OWRSR-O64 € 129

White Sunray - Steel
- Silver Rose Gold Duo

EAN: 8720246519389



06.



OWGMG-O73 € 119

White Sunray - Mesh
- Gold

EAN: 8720791521516



07.



OWSMS-O74 € 119

White Sunray - Mesh
- Silver

EAN: 8720791521523



08.



OWRMR-O59 € 119

White Sunray - Mesh
- Rose Gold

EAN: 8720246516418



09.



OGGSG-O71 € 129

Green - MOP - Steel
- Gold

EAN: 8720791521479



10.



OGGSS-O72 € 129

Green - MOP - Steel
- Silver

EAN: 8720791521486



The Pearl Edit

- Case dimensions: 36 mm
- Case thickness: 7.5 mm
- Dial type: Mother of Pearl
- Strap size: 18 mm
- Strap material: Stainless steel (01 - 07)
Genuine leather (08)



RMGSG-R01 € 119

White MOP - Steel
- Gold

EAN: 8720246513967



RMSSS-R02 € 119

White MOP - Steel
- Silver

EAN: 8720246513974



RMRSR-R03 € 119

White MOP - Steel
- Rose Gold Silver Duo

EAN: 8720246513981



RMGMG-R06 € 99

White MOP - Mesh
- Gold

EAN: 8720246519440



RBGMG-R07 € 99

Black MOP - Mesh
- Gold

EAN: 8720246519457



RMSMS-R08 € 99

White MOP - Mesh
- Silver

EAN: 8720246519464



RMRMR-R09 € 99

White MOP - Mesh
- Rose Gold

EAN: 8720246519471



RMBLG-R04 € 99

White MOP - Butter
Leather - Gold

EAN: 8720246514025



The Boxy

- Case dimensions: 26 × 28 mm
- Case thickness: 7.0 mm
- Dial type: Matte (01, 08, 10) Sunray etching (02 - 07, 09)
- Strap size: 16 mm
- Strap material: Stainless steel (01 - 08)
Genuine leather (09) Nubuck leather (10)

01.



QBSG-Q017 € 119

Black - Steel
- Gold

EAN: 8720039330641



02.



QWSG-Q09 € 119

White Sunray - Steel
- Gold

EAN: 8719632575122



03.



QWSS-Q08 €119

White Sunray - Steel
- Silver

EAN: 8719632575115



04.



QVSGD-Q013 € 119

White Sunray - Steel
- Silver Gold Duo

EAN: 8720039330528



05.



QWSG-Q03 € 109

White Sunray - Mesh
- Gold

EAN: 8719632575061



06.



QWSS-Q02 € 109

White Sunray - Mesh
- Silver

EAN: 8719632575054



07.



QWSR-Q01 € 109

White Sunray - Mesh
- Rose Gold

EAN: 8719632575047



08.



QBMG-Q06 € 109

Black - Mesh
- Gold

EAN: 8719632575092



09.



QSCG-Q029 € 109

White Sunray - Cognac
- Gold

EAN: 8720039333956



10.



QBFGG-Q031 €109

Black - Forest Green
- Gold

EAN: 8720039334168



The Boxy XS

- Case dimensions: 22 × 24 mm
- Case thickness: 6.4 mm
- Dial type: Matte (01) Sunray etching (02 - 08) Champagne (09)
- Strap size: 14 mm
- Strap material: Stainless steel



QMBG-Q025 € 119

Black - Steel
- Gold

EAN: 8720039333444



QMWSG-Q021 € 119

White Sunray - Steel
- Gold

EAN: 8720039333406



QMWSS-Q020 € 119

White Sunray - Steel
- Silver

EAN: 8720039333390



QMWSSG-Q023 € 119

White Sunray - Steel
- Silver Gold Duo

EAN: 8720039333420



QMWSSR-Q024 € 119

White Sunray - Steel
- Silver Rose Gold Duo

EAN: 8720039333437



QMWMG-Q039 € 109

White Sunray - Mesh
- Gold

EAN: 8720039335875



QMWMS-Q038 € 109

White Sunray - Mesh
- Silver

EAN: 8720039335868



QMWMRG-Q040 € 109

White Sunray - Mesh
- Rose Gold

EAN: 8720039335882



QCGSG-Q048 € 119

Champagne - Steel
- Gold

EAN: 8720246519488



The Small Edit

- Case dimensions: 26 mm
- Case thickness: 6.5 mm
- Dial type: Matte (01 - 04) Mother of Pearl (05 - 07) Champagne (08)
- Strap size: 12 mm
- Strap material: Stainless steel

01.



26BSG-268 € 119

Black - Steel
- Gold

EAN: 8720039333987



02.



26WSG-267 € 119

White - Steel
- Gold

EAN: 8720039333970



03.



26SGD-269 € 119

White - Steel
- Silver Gold Duo

EAN: 8720039333994



04.



26SRGD-271 € 119

White - Steel
- Silver Rose Gold Duo

EAN: 8720039334014



05.



SMGMG-S06 € 99

White MOP - Mesh
- Gold

EAN: 8720246519549



06.



26WS-266 € 99

MOP - Mesh
- Silver

EAN: 8719632571964



07.



26WR-265 € 99

MOP - Mesh
- Rose Gold

EAN: 8719632571957



08.



SCGSG-S05 € 119

Champagne - Steel
- Gold

EAN: 8720246519501



The Oval

- Case dimensions: 24 × 29 mm
- Case thickness: 6.7 mm
- Dial type: Mother of Pearl
- Strap size: 14 mm
- Strap material: Stainless steel



OWGSG-OV01 € 119

White MOP - Steel
- Gold

EAN: 8720246511529



OWGSS-OV03 € 119

White MOP - Steel
- Silver

EAN: 8720246511581



OWGSR-OV02 € 119

White MOP - Steel
- Rose Gold

EAN: 8720246511550



OBGSG-OV14 € 119

Black MOP - Steel
- Gold

EAN: 8720246519525



OWGMG-OV10 € 109

White MOP - Mesh Steel
- Gold

EAN: 8720246511956



OWSMS-OV11 € 109

White MOP - Mesh Steel
- Silver

EAN: 8720246511963



OWRMR-OV12 € 109

White MOP - Mesh Steel
- Rose Gold

EAN: 8720246511970



The Ace

- Case dimensions: 33 mm
- Case thickness: 7.5 mm
- Dial type: Silver Sunray (01 - 04) Matte (05)
- Strap size: 18 mm
- Strap material: Stainless steel

01.



ACSG-A03 € 129

Silver Sunray - Steel
- Gold

EAN: 8720039330429



02.



ACSS-A04 € 129

Silver Sunray - Steel
- Silver

EAN: 8720039333970



03.



ACSGD-A01 € 129

Silver Sunray - Steel
- Silver Gold Duo

EAN: 8720039330405



04.



ACSRD-A06 € 129

Silver Sunray - Steel
- Silver Rose Gold Duo

EAN: 8720039330450



05.



ACBKG-A13 € 129

Black - Steel
- Gold

EAN: 8720039330702



The Ace XS

- Case dimensions: 29 mm
- Case thickness: 7.4 mm
- Dial type: Silver Sunray (01 - 04) Matte (05)
- Strap size: 16 mm
- Strap material: Stainless steel

01.



ASGSG-A15 € 129

Silver Sunray - Steel
- Gold

EAN: 8720246511024



02.



ASSSS-A20 € 129

Silver Sunray - Steel
- Silver

EAN: 8720246512007



03.



ASDSSG-A16 € 129

Silver Sunray - Steel
- Silver Gold Duo

EAN: 8720246511031



04.



ASRSR-A21 € 129

Silver Sunday - Steel
Silver Rose Gold Duo

EAN: 8720246512038



05.



ABGSG-A19 € 129

Black - Steel
- Gold

EAN: 8720246511987



The West Village

- Case dimensions: 33 mm
- Case thickness: 7.0 mm
- Dial type: Brushed (01) Mother of Pearl (02, 04, 05, 07) Matte (03, 06)
- Strap size: 16 mm
- Strap material: Nubuck leather (01 - 04)
- Genuine leather (05 - 07)



WBUG-W70 € 99

Vintage Brushed - Velvet Blue - Gold

EAN: 8719324227797



WEGR-W75 € 99

MOP - Elephant Grey - Rose Gold

EAN: 8719324227841



WSPR-W73 € 99

Blush Pink - Soft Pink - Rose Gold

EAN: 8719324227827



WBFLG-W95 € 99

Forest Green Black - MOP - Gold

EAN: 8720246519402



WFGG-W85 € 99

MOP - Fresh Olive Green - Gold

EAN: 8720039335844



WWCG-W86 € 99

Blush - Cognac - Gold

EAN: 8720039335851



WBCLG-W96 € 99

Cognac Black - MOP - Gold

EAN: 8720246519419



The Upper East Side

- Case dimensions: 33 mm
- Case thickness: 7.7 mm
- Dial type: Mother of Pearl
- Strap size: 16 mm
- Strap material: Stainless steel



UEWG-U21 € 119

MOP - Steel
- Gold

EAN: 8719324227742



UEWS-U22 € 119

MOP - Steel
- Silver

EAN: 8719324227759



UBGSG-U35 € 119

Black MOP - Steel
- Gold

EAN: 8720246519426



UBSSS-U36 € 119

Black MOP - Steel
- Silver

EAN: 8720246519433



UWDSSG-U30 € 119

MOP - Steel
- Silver Gold Duo

EAN: 8720246511055



UWGSG-U31 € 119

Crystals MOP - Steel
- Gold

EAN: 8720246512069



UWSSS-U32 € 119

Crystals MOP - Steel
- Silver

EAN: 8720246512090



UGGSG-U37 € 119

Green - MOP - Steel
- Gold

EAN: 8720791521493



UGSSS-U38 € 119

Green - MOP - Steel
- Silver

EAN: 8720791521509



The Mercer

- Case dimensions: 38 mm
- Case thickness: 8.0 mm
- Dial type: Matte
- Strap size: 18 mm
- Strap material: Stainless steel



MWG-M41 € 99

White - Mesh
- Gold

EAN: 8719324227193



MWS-M40 € 99

White - Mesh
- Silver

EAN: 8719324227186



MWR-M42 € 99

White - Mesh
- Rose Gold

EAN: 8719324227209



MBR-M45 € 99

Black - Mesh
- Rose Gold

EAN: 8719324227698



MBB-M43 € 99

Black - Mesh
- Black

EAN: 8719324227216



The Tribeca

- Case dimensions: 33 mm
- Case thickness: 7.0 mm
- Dial type: Matte
- Strap size: 16 mm
- Strap material: Stainless steel



TWG-T51 € 99

White - Mesh
- Gold

EAN: 8719324227414



TWS-T52 € 99

White - Mesh
- Silver

EAN: 8719324227421



TWR-T50 € 99

White - Mesh
- Rose Gold

EAN: 8719324227407



TBR-T59 € 99

Black - Mesh
- Rose Gold

EAN: 8719324227711



Gift Sets



WEGTR-X184 € 119

The West Village Elephant
Grey + Mesh Rose Gold Strap

EAN: 8719632571858



BFGMG-X237 € 129

The Boxy Black Forest Green
Gold + Mesh Gold Strap

EAN: 8720039334915



BMWMG-X240 € 139

The Boxy XS White Sunray
Gold + Mesh Gold Strap

EAN: 8720039334946



BMWLBG-X241 € 139

The Boxy XS White Sunray
Gold + Multi Liquid Charms
Bracelet Gold

EAN: 8720039334953



Straps

Straps 12 mm

The Small Edit, The Octagon XS and The Gemme

- Strap material: Stainless steel (01 - 15) Nubuck leather (16 - 19)
- Closure: Jewelry clasp (01 - 15) Buckle clasp (16 - 19)

01.



GGSG-S344 € 59

Steel - Gold

EAN: 8720791521530



02.



GDSGS-S345 € 59

Steel - Silver Gold Duo

EAN: 8720791521547



03.



GSSS-S346 € 59

Steel - Silver

EAN: 8720791521554



04.



OCXSG-S337 € 59

Steel - Gold

EAN: 8720246519600



05.



OCXGD-S338 € 59

Steel - Silver & Gold

EAN: 8720246519617



06.



OCXSS-S339 € 59

Steel - Silver

EAN: 8720246519624



07.



OCXRD-S340 € 59

Steel - Silver Rose Gold Duo

EAN: 8720246519631



08.



SGMG-S324 € 39

Mesh - Gold

EAN: 8720246513882



09.



26SI-S159 € 39

Mesh - Silver

EAN: 8719632572374



10.



26RG-S158 € 39

Mesh - Rose Gold

EAN: 8719632572367



11.



26SG-S202 € 59

Steel - Gold

EAN: 8720039334106



12.



26SRG-S204 € 59

Steel - Rose Gold

EAN: 8720039334120



13.



26SGD-S203 € 59

Steel - Silver Gold Duo

EAN: 8720039334113



14.



26SRGD-S205 € 59

Steel - Silver Rose Gold Duo

EAN: 8720039334137



15.



SSSS-S327 € 59

Steel - Silver

EAN: 8720246513912



16.



SBNG-S326 € 39

Black - Gold

EAN: 8720246513905



17.



SGNS-S325 € 39

Elephant Grey - Silver

EAN: 8720246513899



18.



SMGLR-S322 € 39

Elephant Grey - Rose Gold

EAN: 8720246513851



19.



SMP LR-S323 € 39

Soft Pink - Rose Gold

EAN: 8720246513868



Straps 14 mm

The Octagon, The Boxy XS and The Oval

- Strap material: Stainless steel (01 - 12) Genuine leather (16) Nubuck leather (17, 18)
- Closure: Jewelry clasp (01 - 15) Buckle clasp (16 - 18)

01.



QMSG-S195 € 59

Steel - Gold

EAN: 8720039333468



02.



QMSS-S194 € 59

Steel - Silver

EAN: 8720039333451



03.



QMSRG-S196 € 59

Steel - Rose Silver

EAN: 8720039333475



04.



QMSSG-S197 € 59

Steel - Silver Gold Duo

EAN: 8720039333482



05.



QMSSR-S198 € 59

Steel - Silver Rose Gold Duo

EAN: 8720039333499



06.



OCWSG-S231 € 59

Steel - Gold

EAN: 8720039336049



07.



OCWSS-S232 € 59

Steel - Silver

EAN: 8720039336056



08.



OCWRG-S233 € 59

Steel - Rose Gold

EAN: 8720039336063



09.



OSSGS-S301 € 59

Steel - Silver Gold Duo

EAN: 8720039339255



10.



OGSG-S308 € 59

Steel - Gold

EAN: 8720246511543





11. **OGSS-S310 € 59**

Steel - Silver

EAN: 8720246511604



12. **OGSR-S309 € 59**

Steel - Rose Gold

EAN: 8720246511574



13. **QMWMG-S235 € 39**

Mesh - Gold

EAN: 8720039336094



14. **QMWMS-S234 € 39**

Mesh - Silver

EAN: 8720039336070



15. **QMWMR-S236 € 39**

Mesh - Rose Gold

EAN: 8720039336100



16. **OBSBGS-S300 € 29**

Black Leather - Gold

EAN: 8720039339248



17. **OGNS-S328 € 39**

Elephant Grey Nubuck - Silver

EAN: 8720246513929



18. **WGNG-S329 € 39**

Forest Green Nubuck - Gold

EAN: 8720246513950



Straps 16 mm

The Boxy, The Ace XS, The West Village, The Upper East Side and The Tribeca

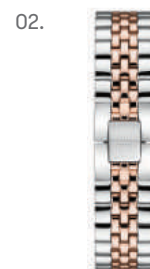
- Strap material: Stainless steel (01 - 15) Nubuck leather (16 - 20) Genuine leather (21 - 26) Caviar patterned genuine leather (27 - 29)
- Closure: Jewelry clasp (01 - 09, 13 - 15) Butterfly clasp (10 - 12) Buckle clasp (16 - 29)



01. **QVSGD-S191 € 59**

Steel - Silver Gold Duo

EAN: 8720039330610



02. **QVSRD-S192 € 59**

Steel - Silver Rose gold Duo

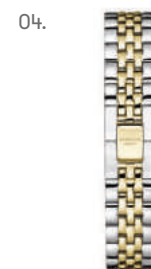
EAN: 8720039330627



03. **AGTSG-S305 € 59**

Steel - Gold

EAN: 8720246511000



04. **AGTSSG-S306 € 59**

Steel - Silver Gold Duo

EAN: 8720246511017



05. **ASTSS-S318 € 59**

Steel - Silver

EAN: 8720246512021



06.



ASRTSR-S319 € 59

Steel - Silver Rose Gold Duo

EAN: 8720246512052



07.



UDSSG-S307 € 59

Steel - Silver Gold Duo

EAN: 8720246511048



08.



UGSG-S320 € 59

Steel tapered - Gold

EAN: 8720246512083



09.



USSS-S321 € 59

Steel tapered - Silver

EAN: 8720246512113



10.



UEG-S135 € 49

Steel - Gold

EAN: 8719324227865



11.



UES-S136 € 49

Steel - Silver

EAN: 8719324227872



12.



UER-S134 € 49

Steel - Rose Gold

EAN: 8719324227858



13.



TMGS-S126 € 39

Mesh - Gold

EAN: 8719324227599



14.



TMSS-S127 € 39

Mesh - Silver

EAN: 8719324227605



15.



TMRS-S125 € 39

Mesh - Rose Gold

EAN: 8719324227582



16.



WBUGS-S137 € 39

Velvet Blue - Gold

EAN: 8719324227889



17.



WFGG-S211 € 39

Forest Green - Gold

EAN: 8720039334151



18.



WEGRS-S142 € 39

Elephant Grey - Rose Gold

EAN: 8719324227933



19.



WSPRS-S140 € 39

Soft Pink - Rose Gold

EAN: 8719324227919



20.



WBLGS-S138 € 39

Black - Gold

EAN: 8719324227896





21. **WCGRG-S208 € 39**

Cool Grey - Rose Gold

EAN: 8720039334076



22. **WCG-S209 € 39**

Cognac - Gold

EAN: 8720039334083



23. **WAG-S210 € 39**

Aubergine - Gold

EAN: 8720039334090



24. **WOPRG-S206 € 39**

Old Pink - Rose Gold

EAN: 8720039334052



25. **WOGRG-S207 € 39**

Fresh Olive Green - Rose Gold

EAN: 8720039334069



26. **WOGG-S240 € 39**

Fresh Olive Green - Gold

EAN: 8720039337756



27. **UBCSS-S302 € 29**

Black Leather - Silver

EAN: 8720039339293



28. **UBCGS-S303 € 29**

Dark Brown Leather - Gold

EAN: 8720039339309



29. **UGCRG-S304 € 29**

Grey Leather - Rose Gold

EAN: 8720039339316



Straps 18 mm

The Pearl Edit, The Ace and The Bowery

- Strap material: Stainless steel [01 - 11] Genuine leather [12]
- Closure: Jewelry clasp [01 - 11] Buckle clasp [12]



01. **ACSG-S188 € 59**

Steel - Gold

EAN: 8720039330580



02. **ACSS-S189 € 59**

Steel - Silver

EAN: 8720039330597



03. **ACRS-S193 € 59**

Steel - Rose Gold

EAN: 8720039333369



04. **ACSGD-S186 € 59**

Steel - Silver Gold Duo

EAN: 8720039330566



05. **ACSRD-S187 € 59**

Steel - Silver Rose Gold Duo

EAN: 8720039330573



06.



PGTG-S332 € 59

Steel - Gold

EAN: 8720246514520



07.



PSTS-S333 € 59

Steel - Silver

EAN: 8720246514537



08.



PDTR-S334 € 59

Steel - Silver Rose Gold Duo

EAN: 8720246514544



09.



PGTMG-S341 € 39

Steel - Gold

EAN: 8720246519648



10.



PSTMS-S342 € 39

Steel - Silver

EAN: 8720246519655



11.



PRTMR-S343 € 39

Steel - Rose Gold

EAN: 8720246519662



12.



PBTG-S330 € 29

Butter Leather Tapered - Gold

EAN: 8720246514506



Visual Merchandising

Layout & Guidelines

Layout

In consideration for the available space in your window showcase, we ask that for each visual merchandising set you respect the layout of all individual pieces as outlined below.



35 SKUs set **DP025**

Approx. dimensions:
W65 × D55 cm

EAN: 8719632572220



50 SKUs set **DP026**

Approx. dimensions:
W68 × D55 cm

EAN: 8719632572237



The visual backboards are not included by default in the visual merchandising kits. They will be sent separately upon request. You may request several visual backboards - one for your store front window and one for inside the store for instance.



Visual Backboard **DP019**

Large
W38 × H44 cm

EAN: 8719632572442



Guidelines

Keep watches from the same collection together. Don't mix watches with 33mm and 38mm dials on one display element.

DO:



DON'T:



Place taller elements at the back and shorter elements at the front.

DO:



DON'T:



Place Studio items laying down straight on the available ramp.

DO:



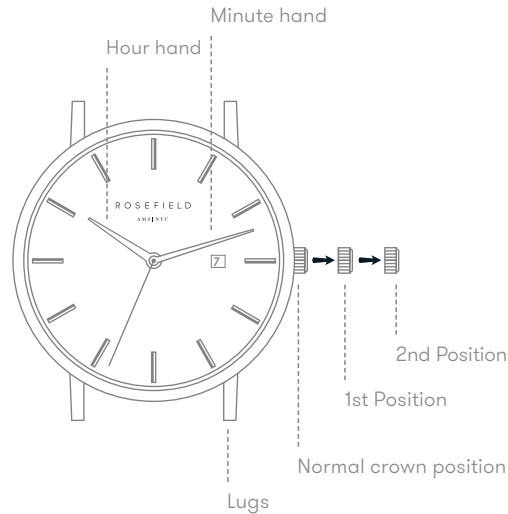
DON'T:



Instructions

SETTING THE TIME AND THE DATE

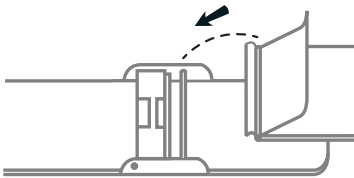
1. Remove the plastic stopper to start the watch.
2. Pull the crown out to the second position.
3. Turn the crown to set the time.
4. Push the crown back to the normal position.



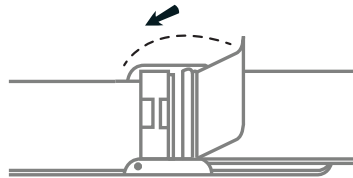
1. Pull the crown out to the first position.
2. Turn the crown counter-clockwise to set the date.
3. Push the crown back to the normal position.

** If the date is set between the hours of 9:00 PM and 1:00 AM, the date may not change the following day.*

CLOSING THE CLASP OF YOUR MESH STRAP

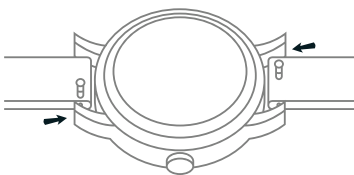


1. Hook the top part of the clasp onto the thin metal bar.

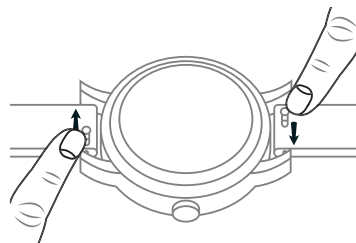


2. Snap the closure on.

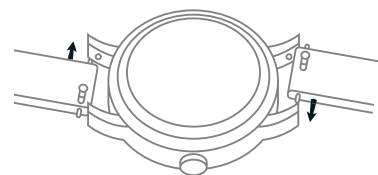
CHANGING YOUR STRAP



1. Securely hold the watch and locate the pin mechanism on the bottom side of the strap.



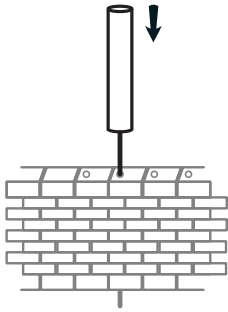
2. Slide the pin to the opposite side to release the strap from the lugs.



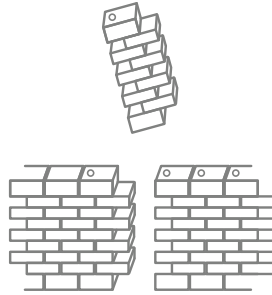
3. To attach a new strap, start with the pin located on the opposite side of the slide mechanism. Place the pin in the lug, while slightly tilting the strap forward. Slide the pin mechanism and place the other pin between the lugs.

Instructions

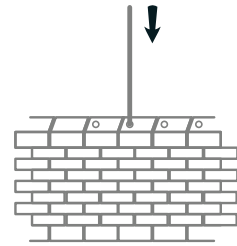
ADJUSTING THE SIZE OF YOUR STEEL STRAP



1. Insert the strap tool (supplied with every steel strap) into the hole on the side of the strap and push the pin out in the direction of the arrow. Using a small household hammer, tap lightly until the pin comes out on the other side. Grasp the pin and pull out.

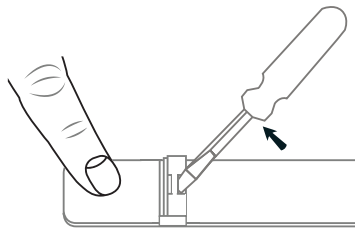


2. Remove or add required strap links. If removing more than one strap link, remove an equal number of links from both sides to keep the strap even and symmetrical.

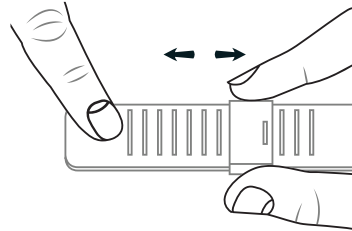


3. After removing or adding the necessary number of strap links, place the pins back in the opposite direction of the arrows, the pin's grooved top faced down. To finish, tap the pins back through using the hammer.

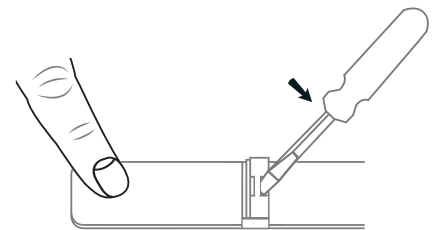
ADJUSTING THE SIZE OF YOUR MESH STRAP



1. Insert a metal tool into the slot and lift up the plate clamp.

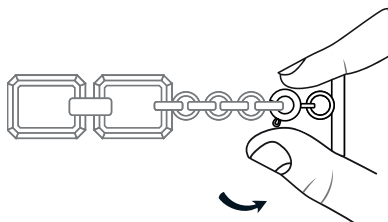


2. On the back side, slide the locking clasp to the desired position to adjust the length of the strap.

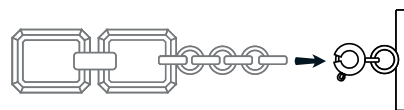


3. Press the plate clamp back down (firmly) to lock the clasp to the mesh strap.

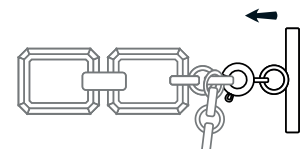
ADJUSTING THE SIZE OF YOUR CHAIN BRACELET



1. Open the spring lock, and release the T-bar from the chain tail.



2. Separate the T-bar from the chain tail.

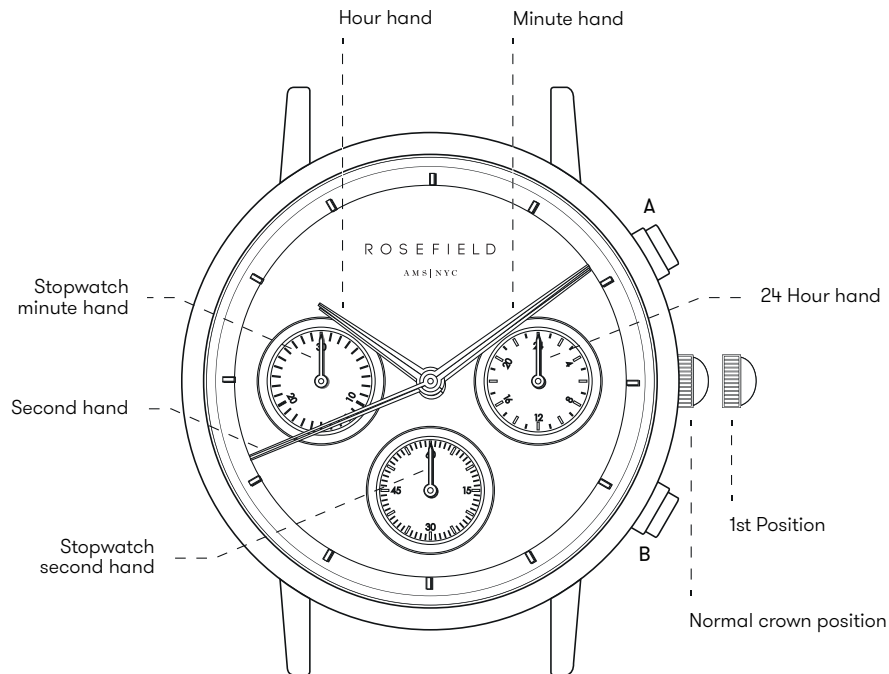


3. Attach the T-bar with spring lock to the chain tail in the correct size to fit your wrist.

Instructions

USING YOUR STOPWATCH

Your Rosefield product is guaranteed free from manufacturing defects for a period of 24 months from the date of purchase. This guarantees the buyer that the product meets the standards of usability, reliability, and durability.



1. Press button "A" to start the stopwatch.

2. The stopwatch can be started and stopped by pressing button "A".

3. Pressing button "B" resets the stopwatch and the stopwatch minute and second hands return to their ZERO positions.

* Button A / B does not function during resetting the stopwatch.



STOPWATCH RESET

This procedure should be performed when the stopwatch second hand does not return to the ZERO position after the stopwatch has been reset, and after the battery has been replaced.

1. Pull the crown out to the 1st Position.

2. Press button "A" to set the second hand of the stopwatch to the ZERO position.

3. Once the hands have been zeroed, the time is reset and you can return the crown to its normal position.

* The stopwatch minute hand is synchronized with the second hand of the stopwatch.

* The second hand of the stopwatch can be advanced rapidly by continuously pressing button "A".